

## The TIDE-Project – Sustainable Tidal River Development in North Sea Region Estuaries

K. Hamer<sup>1</sup>, J. Kress<sup>2</sup>, J. Schröter<sup>1</sup> and S. Saathoff<sup>3</sup>

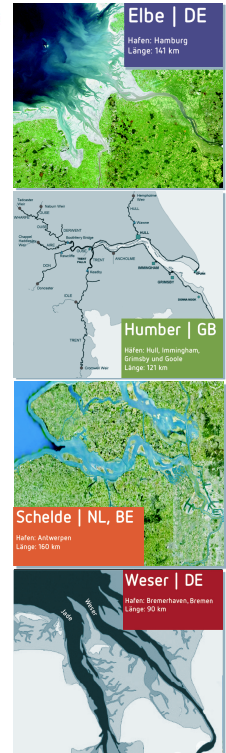
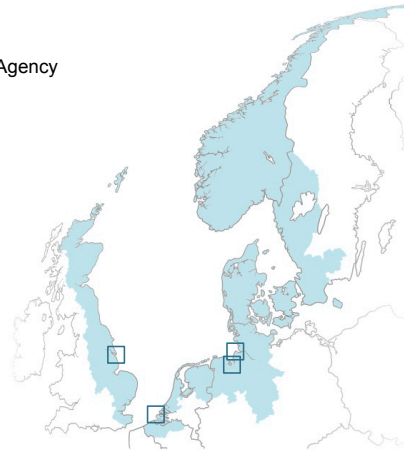
<sup>1</sup>Department of Earth Sciences, University of Bremen and

<sup>2</sup>Ministry of Economic Affairs and Ports, Free Hanseatic City of Bremen

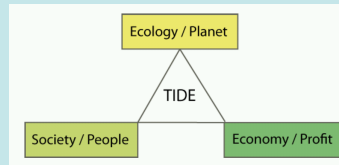
<sup>3</sup>Lower Saxony Water Management, Coastal Defence and Nature Conservation Agency

### Four estuaries Characteristics and problems

- used as shipping channels leading to large ports
- characterized by strong tidal influence (exceeding 4 m)
- concerned by the outcome of climate change
- transporting large quantities of sediment
- affected by dredging and disposal activities, flood protection requirements and habitats losses
- Major parts of estuarine areas are designated NATURA 2000 sites
- Management of estuaries bears conflicts of interests. Managing these regions requires integration of input from many perspectives (ecology, economy & society).
- To control conflicts concrete “tools” are necessary to enable stakeholders to take the whole estuarine system into account



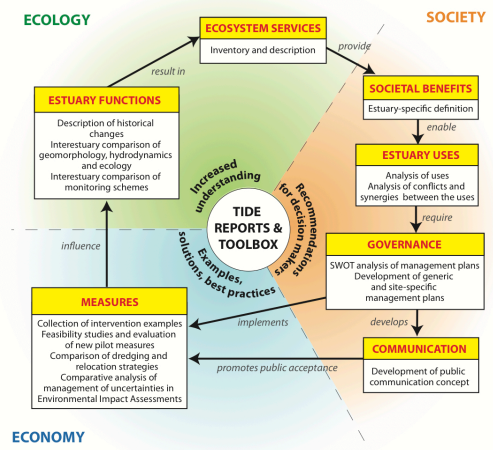
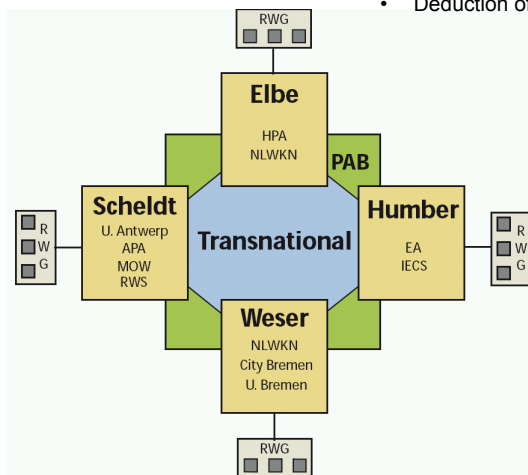
Balancing the interests of ecology, economy and society:



### Approach –transnational cooperation:

#### Work step:

- Data collection
- Analysis and inter estuarine comparison
- Deduction of management tools



- Yellow boxes refer to general processes taking place in the ecological, economical and societal realms of an estuary and the arrows point to the inter-relations between them.  
- White boxes refer to the activities to be conducted by the TIDE project in the framework of these various processes.

**Partners** represent ports, water management, nature conservation authorities and scientists  
**Regional working groups** involving various stakeholders give input  
**Transnational working groups** work on topics such as:

- Ecosystem functions, services and benefits
- Estuarine government
- Practical measures
- Pilot projects

#### TIDE Project

3,7 Mio €  
50 % funded by  
INTERREG IV B  
North Sea Program  
January 2010 to  
December 2012  
Lead: Hamburg Port  
Authority  
[www.tide-project.eu](http://www.tide-project.eu)

### Expected results:

- Improved knowledge on estuary functioning
- TIDE- Toolbox including recommendations on sustainable, integrative management strategies for estuaries considering ecosystem services approach, governance and communication processes and instruments, compensation and sediment management measures (e.g. dredging and disposal), environmental impact assessment tools