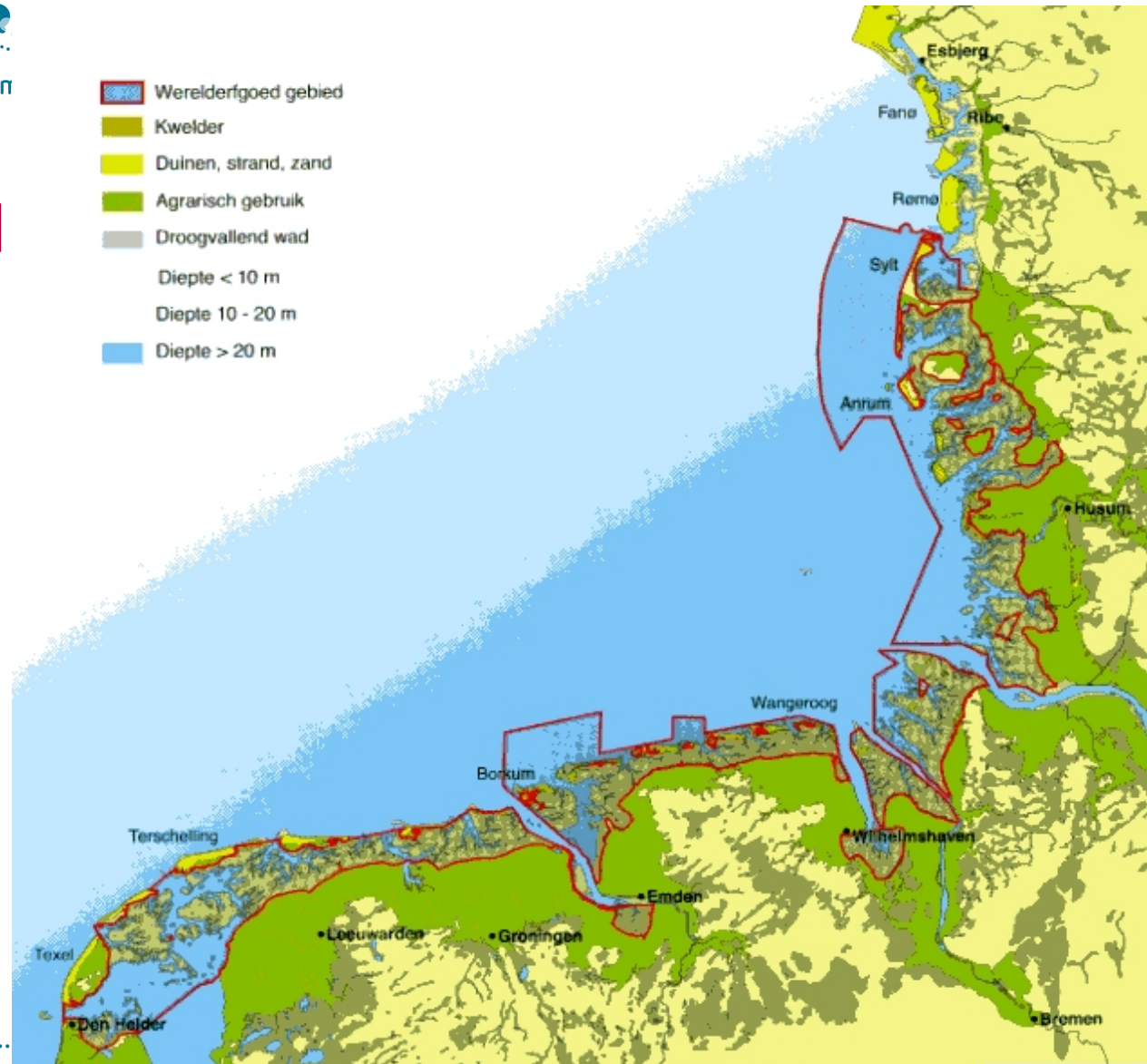
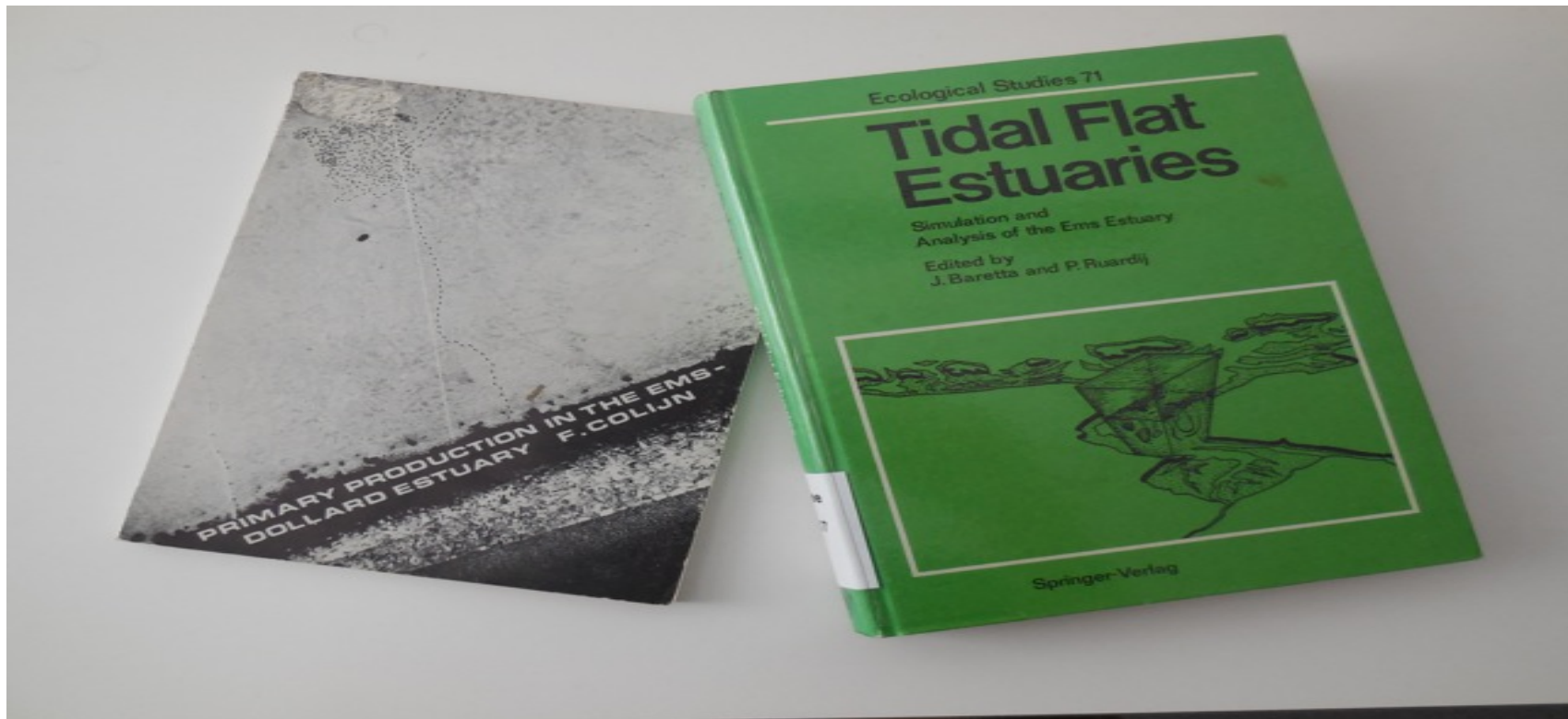


Prof. Dr. Franciscus Colijn, HZG, Geesthacht, Germany

“Challenges of estuarine management: setting the scene”

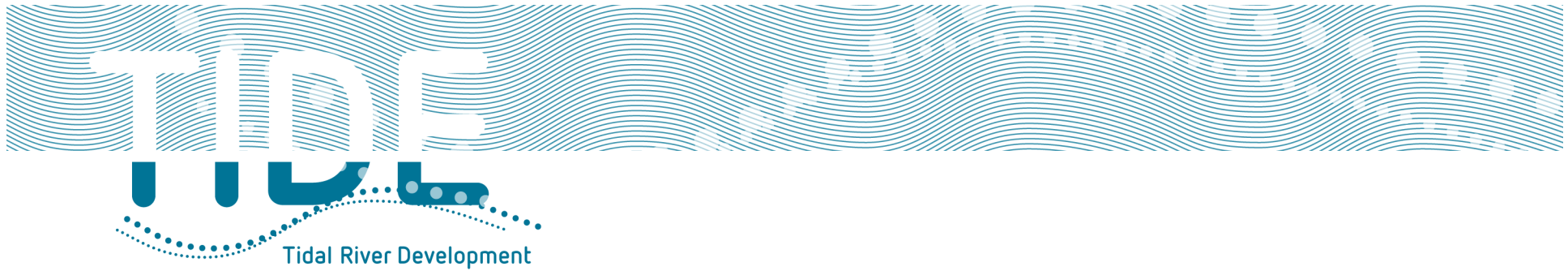
UNESCO World heritage site





Transport of cargo in a globalized world





Transport of cargo in a globalized world



Oystercatchers on a tidal flat



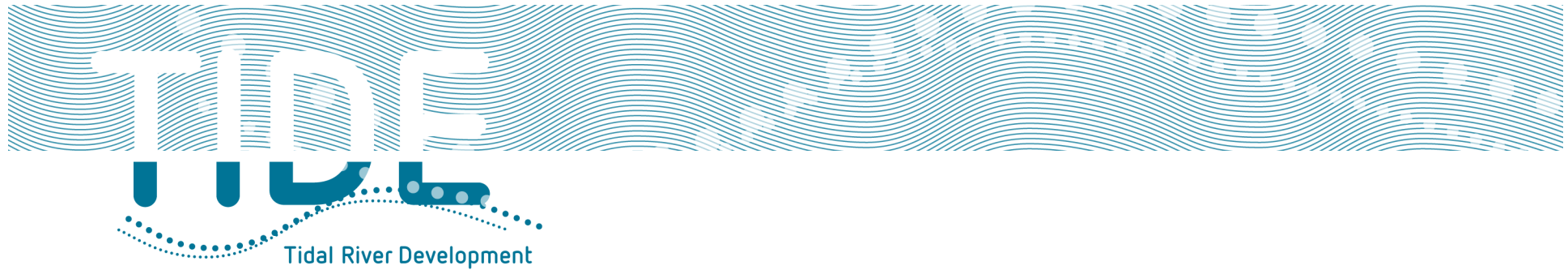
Migratory birds in the Elbe estuary



TIDE

Tidal River Development





Contents of summary report

- The four TIDE estuaries
 - Estuary functioning
 - Ecosystem services
 - Uses and conflicts
 - Management initiatives and governance
 - Management measures
 - Monitoring
 - TIDE Toolbox
-

Importance of Hamburg harbour



Latest newspaper article (22.04.2013)

