

Nature conservation at the Weser...

Examples of protected habitats and species in the Weser estuary

(HD Annex I)

- estuaries

(BD Annex I and migratory birds)

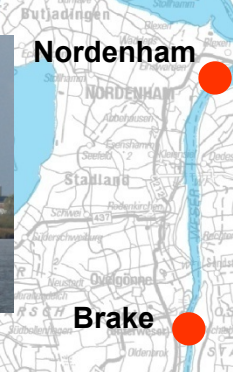
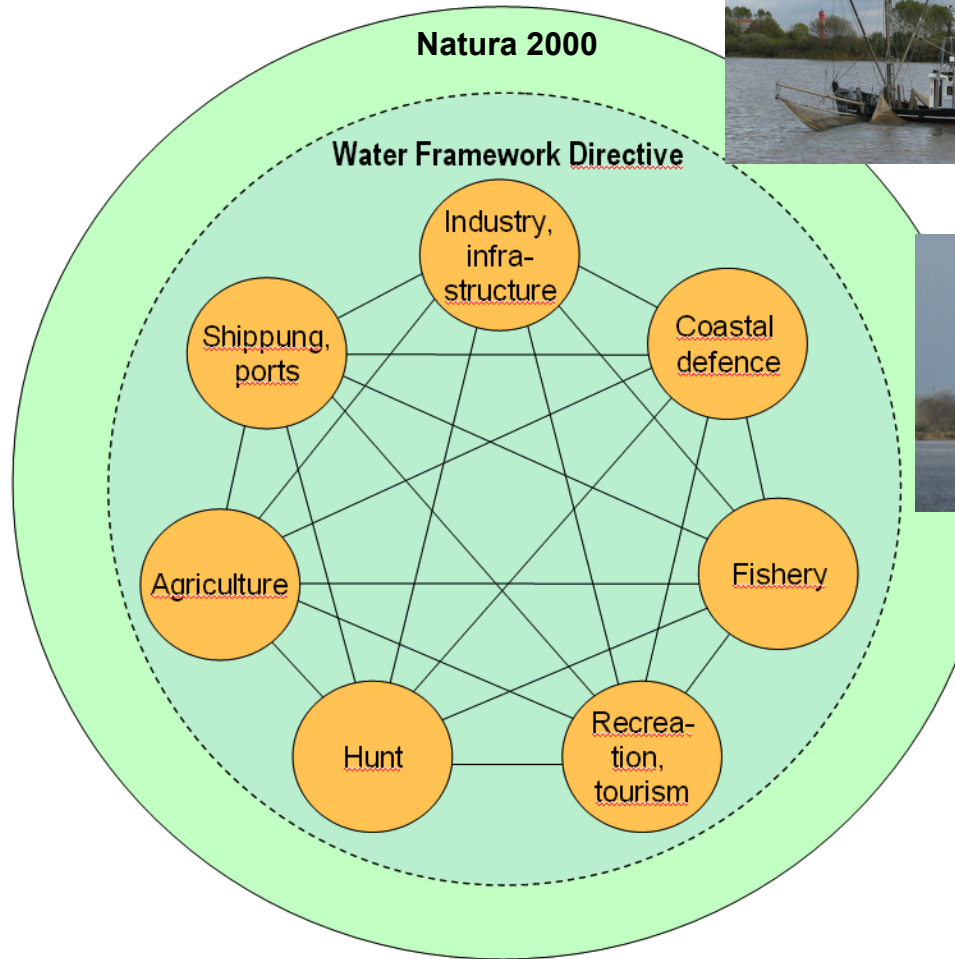
- Bittern
- Barnacle Goose
- Tied Avocet
- Bluethroat

(HD Annex II)

- Sea Lamprey
- Twaite Shad
- Lamprey



... and other public interests along the tidal Weser



Natura 2000 in the Weser region

SCI Lower Saxony

- 001 Nationalpark Niedersächsisches Wattenmeer (ca. 277.000 ha)
- 203 Unterweser (ca. 4.100 ha)
- 026 Nebenarme der Weser mit Strohhäuser Plate und Juliusplate (ca. 1.600 ha)
- 174 Mittlere und Untere Hunte (ca. 570 ha)

SPA Lower Saxony

- V01 Nationalpark Niedersächsisches Wattenmeer (ca. 277.000 ha)
- V27 Unterweser (ca. 4.600 ha)
- V65 Butjadingen (ca. 5600 ha)

SCI Bremen

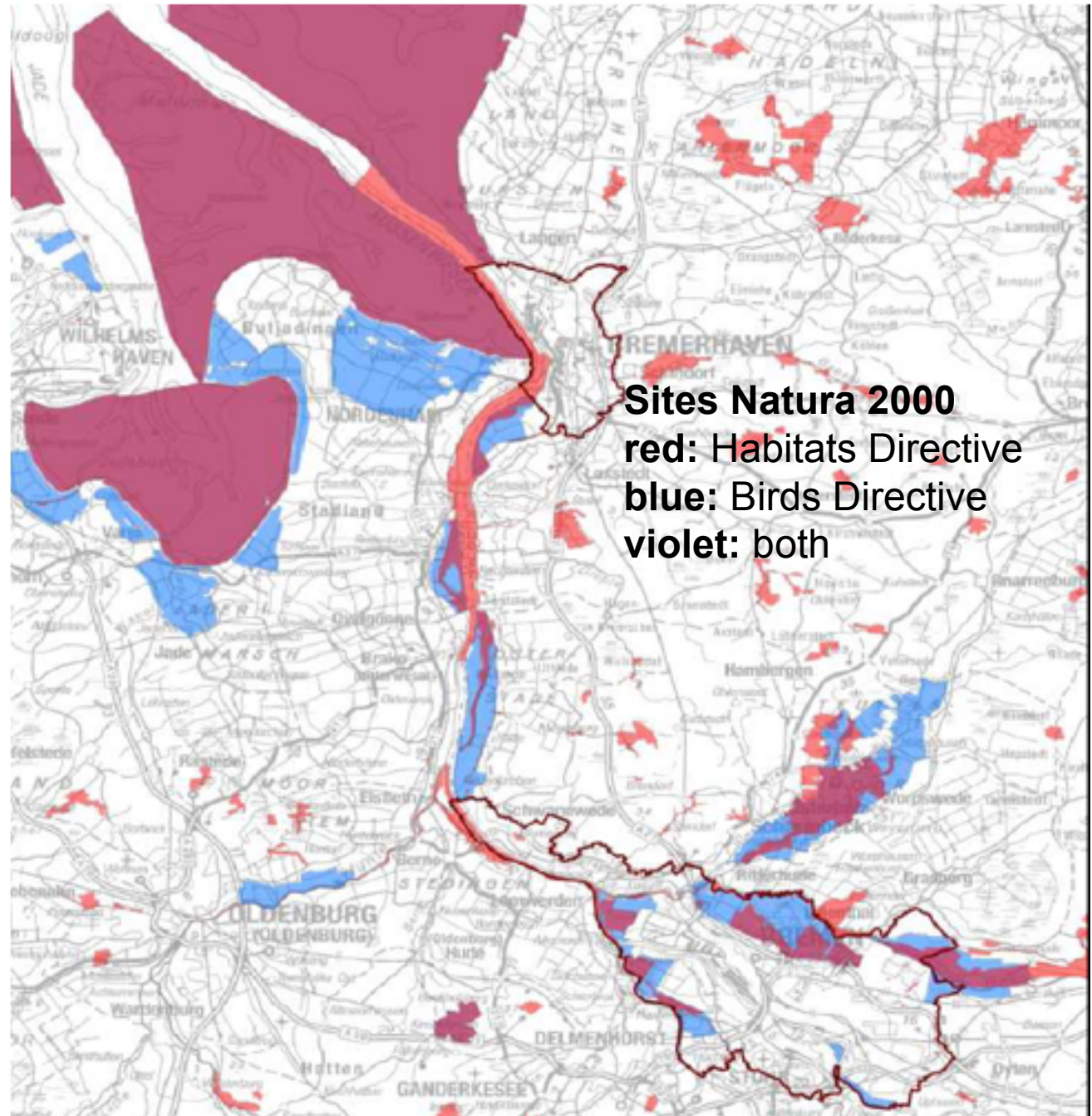
- 35 Weser bei Bremerhaven (ca. 860 ha)
- 34 Weser zw. Ochtum u. Rekum (ca. 445 ha)
- 26 Werderland (ca. 390 ha)

SPA Bremen

- 05 Werderland
- 06 Niedervieland

Quelle:

NLWKN 21.01.08



The situation at estuaries: Ports and Nature

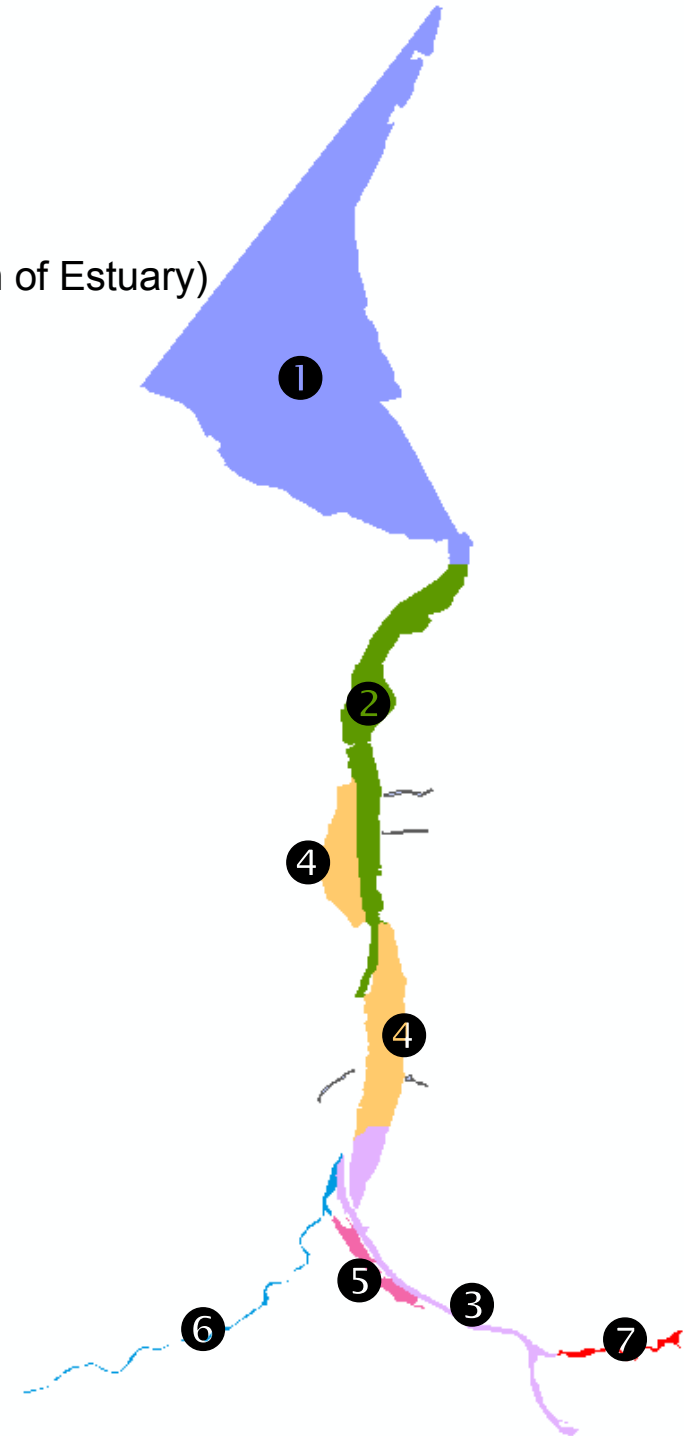


The situation at estuaries: Still nature there!

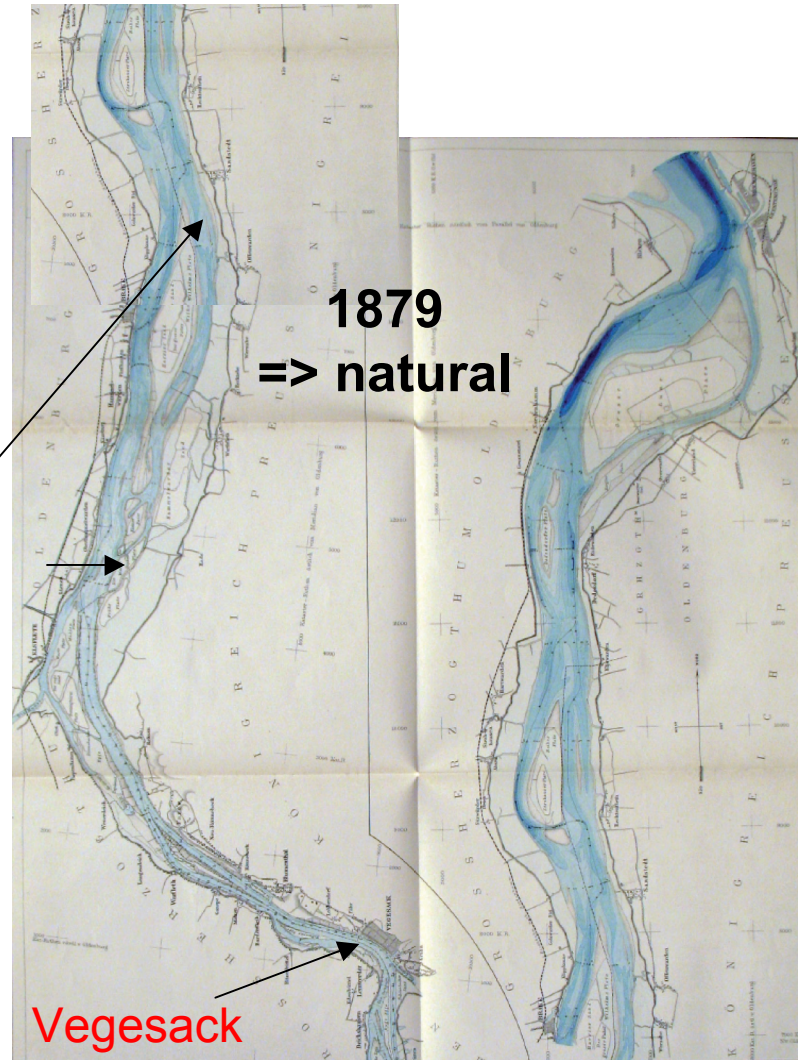
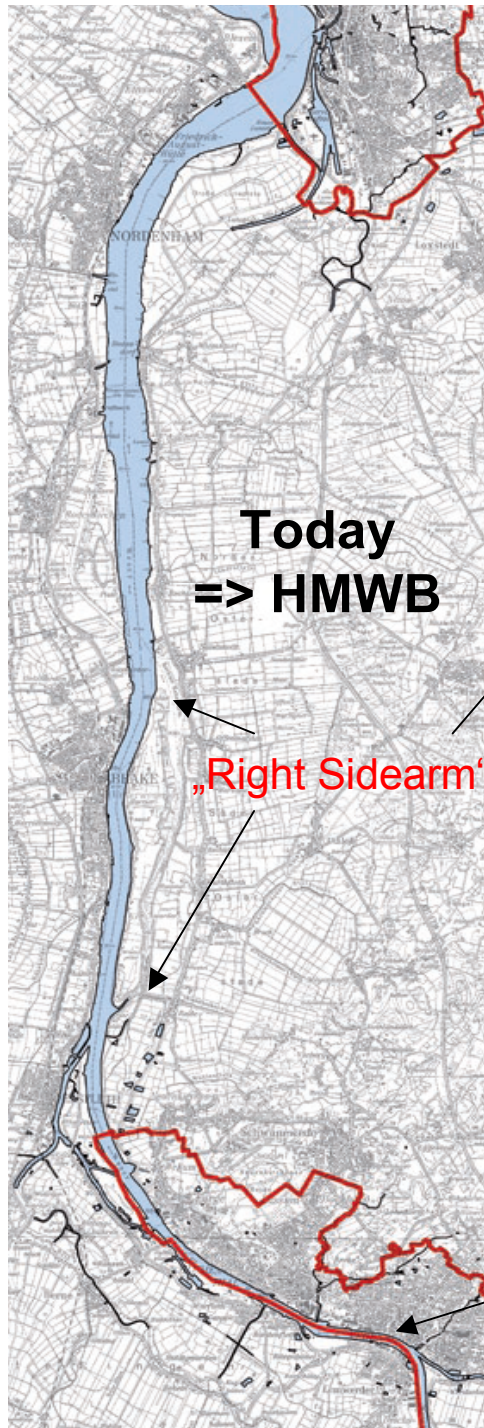


Concept of functional zones in the planning area

- (1) Meso-/polyhaline zone – high to medium salinity (mouth of Estuary)
- (2) Oligohaline zone – low salinity
- (3) Limnic zone - freshwater
- (4) Branches of the oligohalin zone - low salinity
- (5) Branches of the limnic zone
- (6) Left-bank tributary Hunte
- (7) Right-bank tributary Lesum



Ecological Problems at the Weser



- Loss of former side arms
- Loss of shallow water areas
- Loss of undiked areas
- artificial embankments
- Industrialized banks
- Loss of habitat variety
- High tidal range (> 4 m)
- High tidal velocity
- High nitrate concentrations

Ecological Problems / Loss of habitats- artificial embankments



Ecological Problems: High tidal range

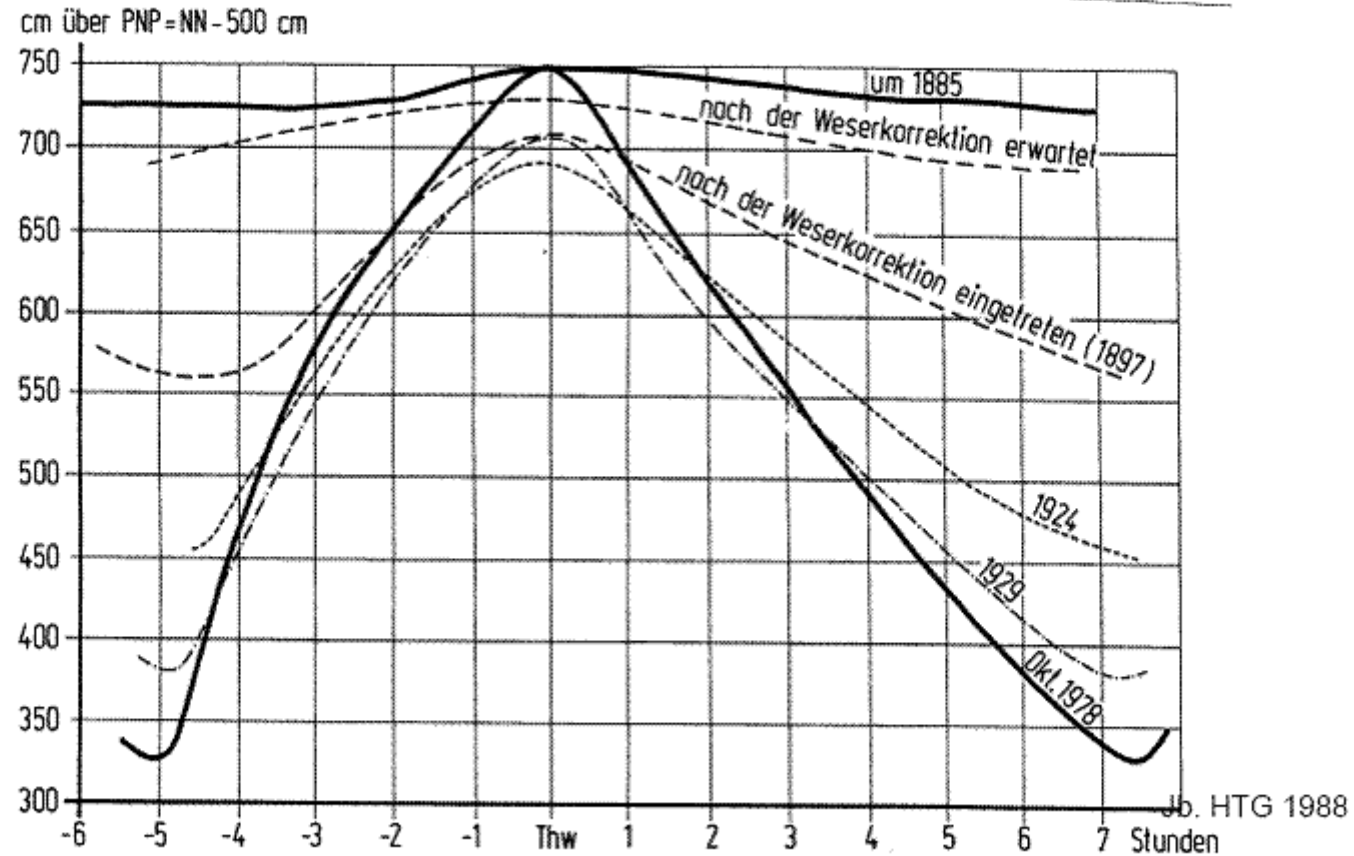


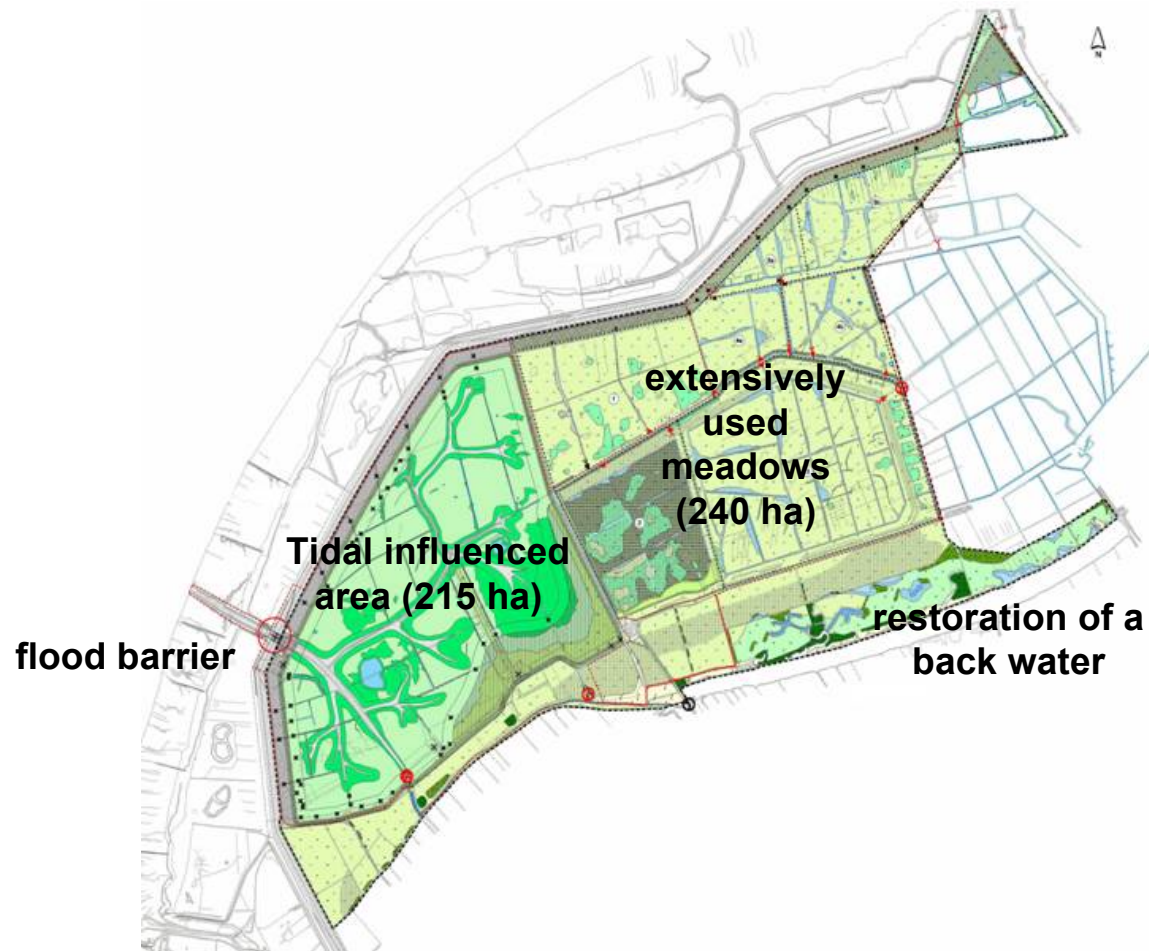
Abb. 8. Mittlere Tidekurven der Weser in Bremen nach den Unterweserausbauten

Tidal amplitude (e.g. Weser, Bremen 1880: 0,3m, 2010: 4,1m)

What we have achieved: The Luneplate as Habitat banking area for different developments



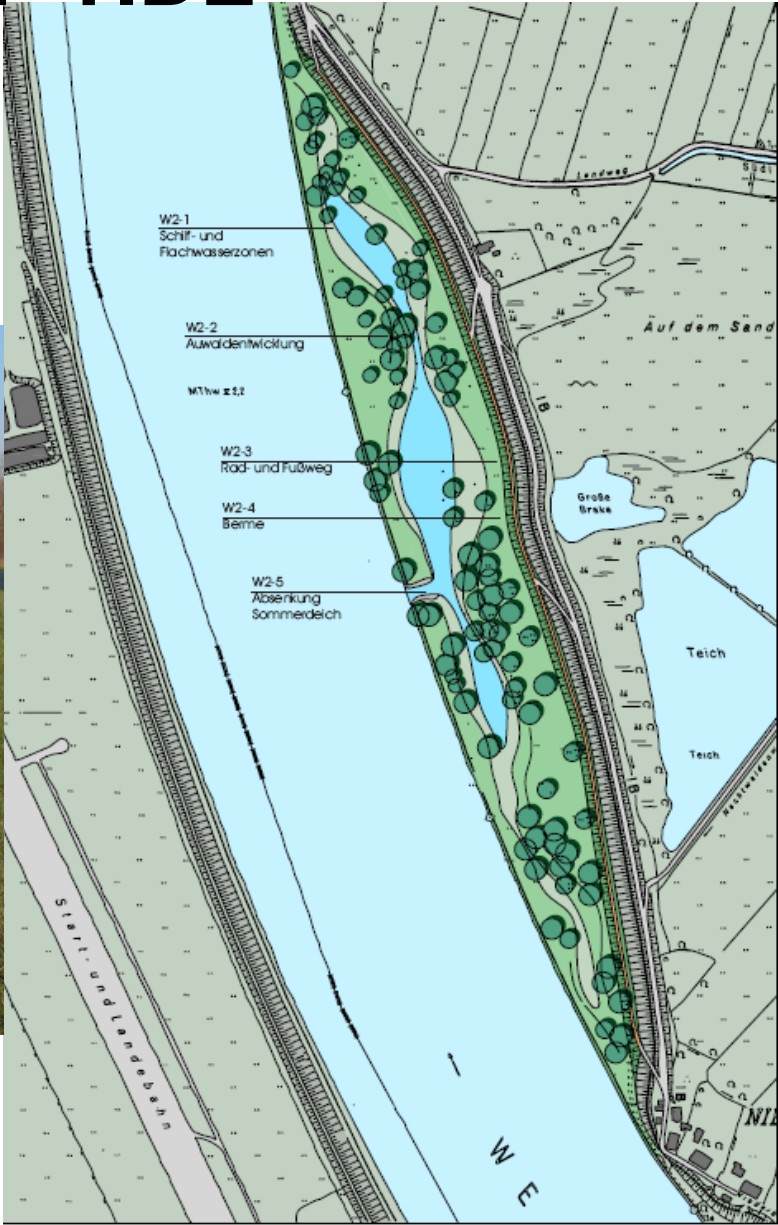
The Luneplate as habitat banking area for different developments



Added value of TIDE



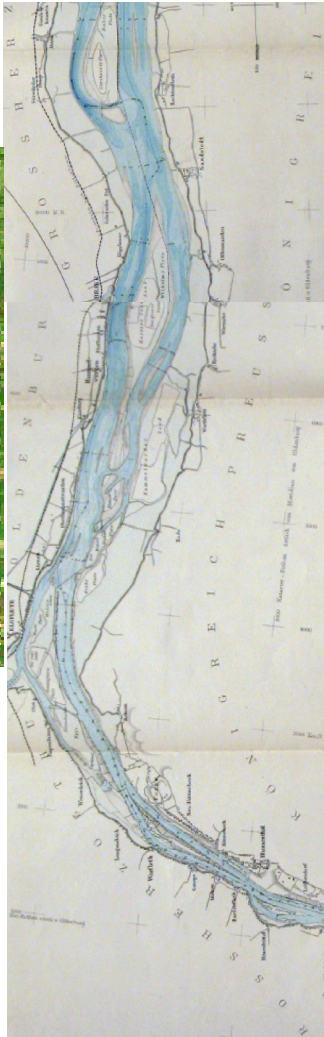
Pilot measure 1: Renaturalising of disturbed river banks



Added value of TIDE



e.g.



Pilot measure 2:
Revitalisation of
shallow water habitats
along the Weser back water
(investigations on possible measures;
area not yet specified)

Pilot measure 3:
Regeneration of hard
substrate ecotopes
in the sublitoral

